

Corr/Grain Dir.

PRINT SIDE
DIE VIEW

Never have dry skin again®

Providing natural skin relief
for over 20 years!



10x Travel-size 1x 8oz 1x 2oz

INGREDIENTS: Aloe Barbadosis Leaf Juice, Water, Glycerin, Glyceryl Stearate, PEG-100 Stearate, Isopropyl Palmitate, Cetyl Alcohol, Phenoxyethanol, Cetyl Lactate, Triethanolamine, Allantoin, Tocopheryl Acetate, Methyl Gluceth-20, Polysorbate 80, Carbomer, Hydrolyzed Glycosaminoglycans, Soluble Collagen, Foeniculum Vulgare (Fennel) Seed Extract, Yucca Schidigera Extract, Vitis Vinifera (Grape) Seed Oil, Zea Mays (Corn) Oil, Hyaluronic Acid, Thiamine HCl, Retinyl Palmitate, Niacinamide, Thioctic Acid, Panax Ginseng Root Extract, Usnea Barbata (Lichen) Extract, Chamomilla Recutita (Matricaria) Flower Extract, Camellia Oleifera Leaf Extract, Symphytum Officinale Extract, Calendula Officinalis Flower Extract, Citrus Grandis (Grapefruit) Extract, Ubiquinone, Hexanoyl Dipptide-3 Norleucine Acetate, Dimethyl Sulfone, Dimethyl MEA, Rosa Moschata (Rosehip) Seed Oil, Prunus Armeniaca (Apricot) Kernel Oil, Caprylic/Capric Triglycerides, Disopropyl Adipate, Alcohol, Ascorbic Acid, Lecithin, Disodium EDTA, Butylated Hydroxytoluene, Colloidal Oatmeal

Questions?
Call 888 LUV-ALOE (588-2563)
toll-free in the US or Canada
International: +1 323 906-2880

infinitealoe.com



Manufactured exclusively for
Ultimate Creations, Inc.
Hollywood, CA 90029



Non-greasy
Soaks in up to 7 layers deep
Doesn't wash off
Protects, relives and soothes
Hydrates dry skin
Balances oily skin
Safe and effective for all skin types

Clinically tested
Hypoallergenic
Certified cruelty-free

Healthy, Radiant Skin
InfiniteAloe® Skin Care is designed to promote softer, healthier, younger-looking skin. Formulated with 100% organic Aloe Vera, this powerful cream reduces dryness, redness, itching, irritation and swelling by supporting the skin's natural rejuvenation process. Safe for all skin types and ages.

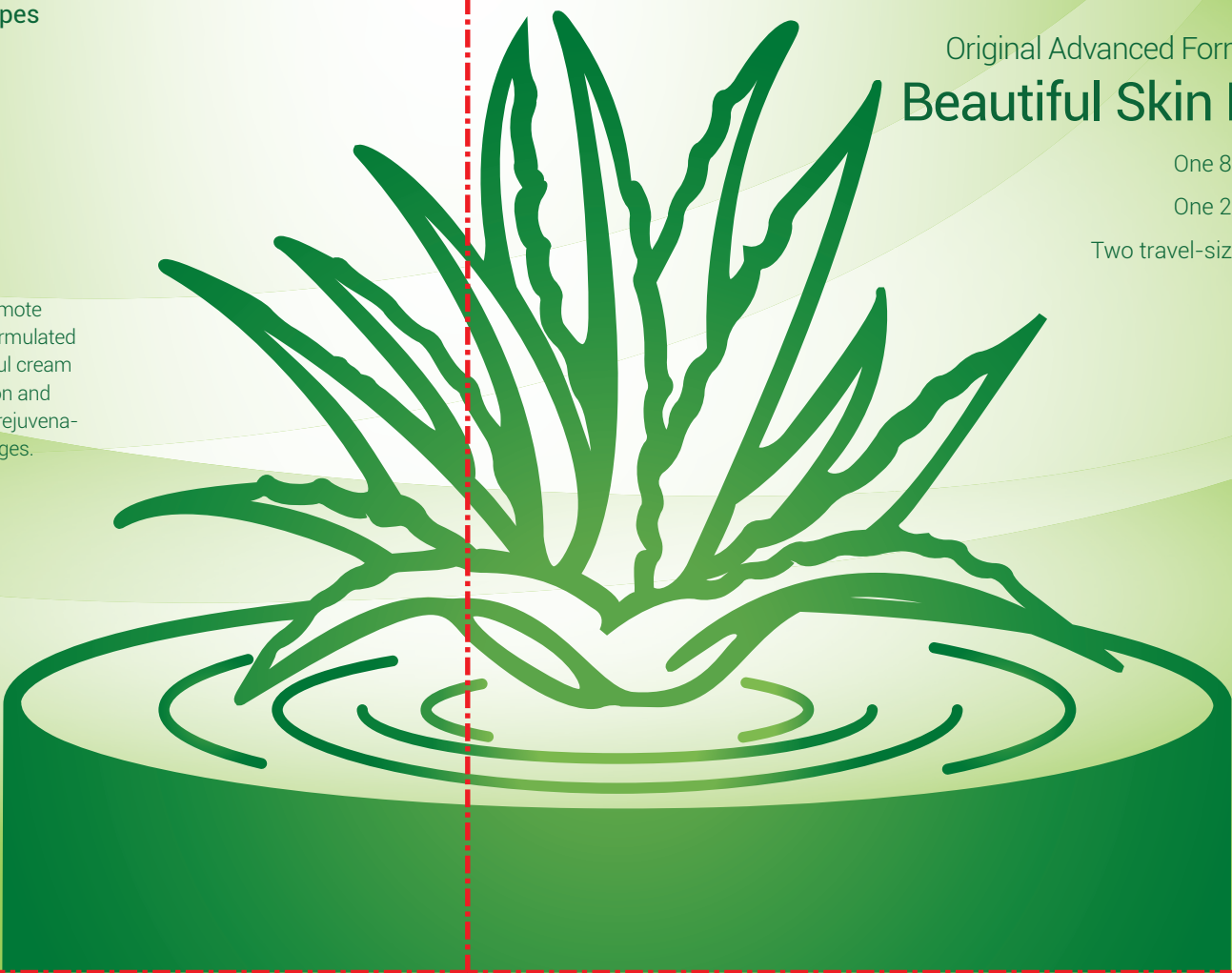
Never have dry skin again®

InfiniteAloe® Skin Care

ALOE VERA FACE & BODY CREAM FOR ALL SKIN TYPES

Original Advanced Formula
Beautiful Skin Kit

One 8oz jar
One 2oz jar
Two travel-size jars



Key Active Ingredients



Aloe Vera
InfiniteAloe® uses only the most powerful type of aloe that feeds your skin with eight life-giving enzymes and 20 powerful amino acids.



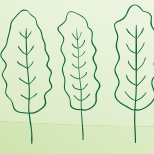
Rose Hips Oil
Its regenerative properties as well as its potency as a moisturizer have made rose hips oil a vital component in InfiniteAloe® Skin Care.



Green Tea
Green tea's polyphenols are powerful antioxidants that assist in the healing process. These "antioxidants" neutralize harmful compounds that attack skin cells.



Grape Seed Oil
Grape Seed Oil brings powerful cellular rebuilding properties deep below the skin's surface to moisturize and aid in protecting skin tissue.



Hyaluronic Acid
Hyaluronic acid plays a role of wrinkle removing, look improving and health protecting.



Calendula
Famous for its ability to stimulate the growth of new skin cells, Calendula has been used extensively in treating wounds, skin abrasions and infections.



Comfrey Root
An excellent skin growth stimulant for soothing pain and used as a treatment for eczema, psoriasis and acne.



Apricot Kernel Oil
Helps make the skin feel softer and smoother, reduces roughness, cracking and irritation with its high potassium and vitamins.